

ROAD SAFETY AND GENDER POLICIES: Mexico City Experience



GOBIERNO DE LA
CIUDAD DE MÉXICO

SECRETARÍA
DE MOVILIDAD

Road safety, inclusion, equity, gender and sustainability: exploring links
November 2021

MOBILITY IN MEXICO CITY



PUBLIC TRANSPORT
Collective
(*micro/corredor*)
33%



WALKING - ONLY
32%



CAR
19%



SUBWAY
13%



TAXI
5%



BRT
2.3%



PUBLICLY-OPERATED BUSES
1.2%



TROLLEYBUS
0.4%



SUBURBAN TRAIN
0.5%



LIGHT RAIL TRAIN
0.3%



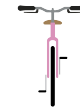
MOTORCYCLE
1%



**MOTO-TAXI/
BICYCLE-CAB**
1.1%



SCHOOL/OFFICE BUS
0.2%

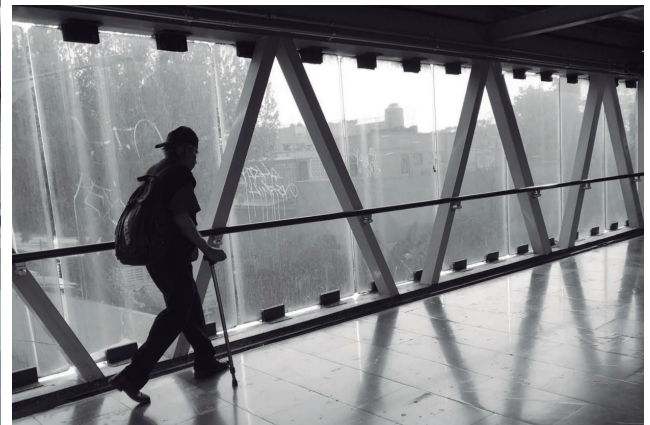


BICYCLE
2.1%

19 million trips in CDMX
8 million people living in CDMX
22 million people living in the Metropolitan Area



INEQUALITY ON MOBILITY



WOMEN'S MOBILITY PATTERNS



Gráfico de barras

Mobility of care

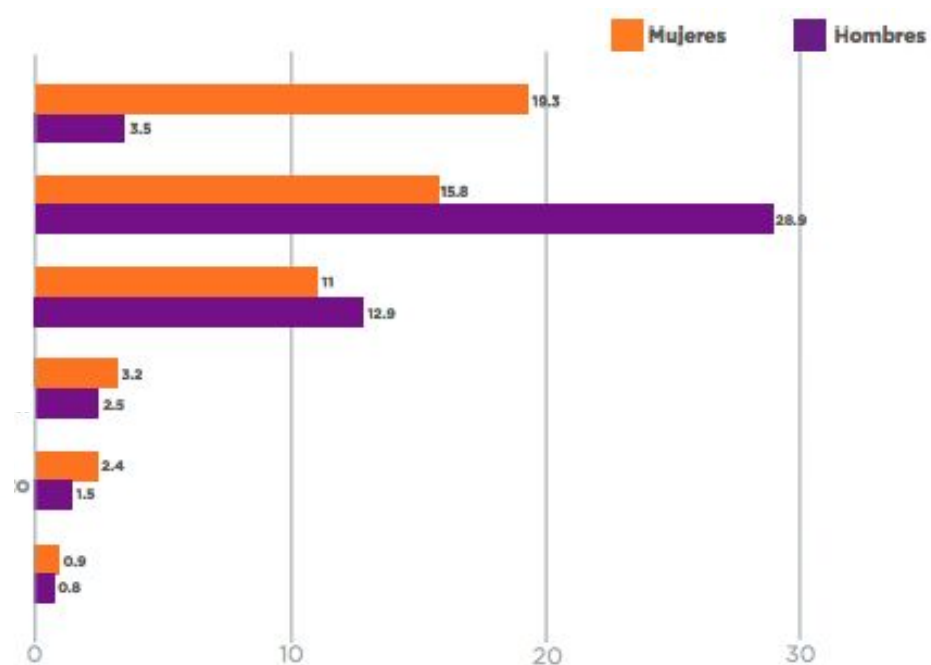
Work-related

Study

Spare

Other purposes

Chores



WOMEN'S MOBILITY PATTERNS



TREN LIGERO Silvia Oliva Neri
Foto: Azul Carazo

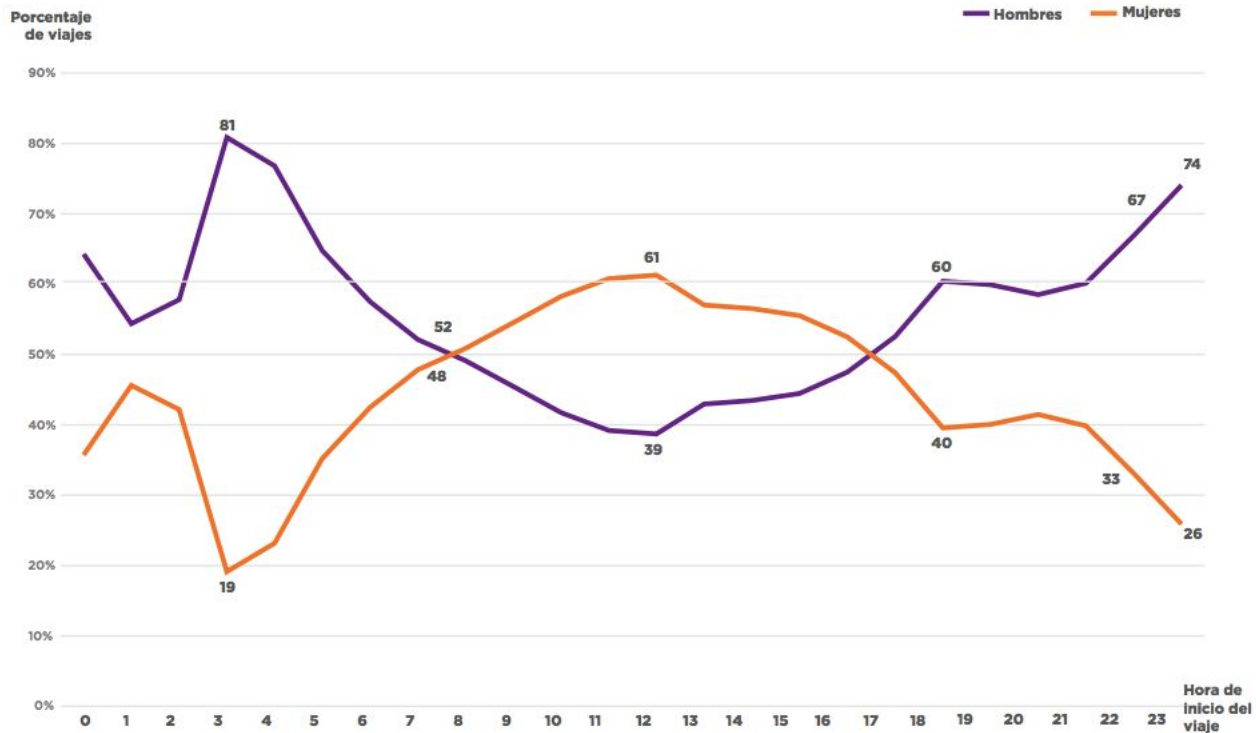
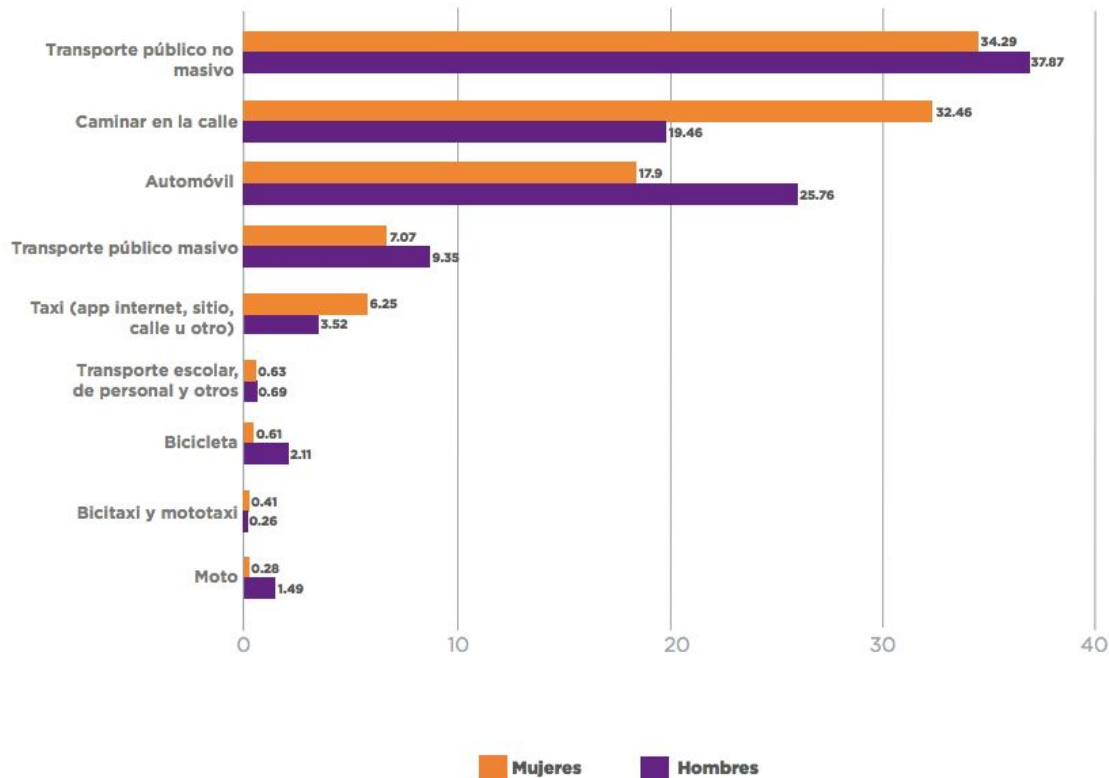


Figura 3. Hora de inicio de viaje. Fuente: Elaboración propia con datos de INEGI, 2017.

WOMEN'S MOBILITY PATTERNS



**Road safety, inclusion, equity, gender
and sustainability: exploring links**

November 2021

ROAD SAFETY DATA: WOMEN FOCUS

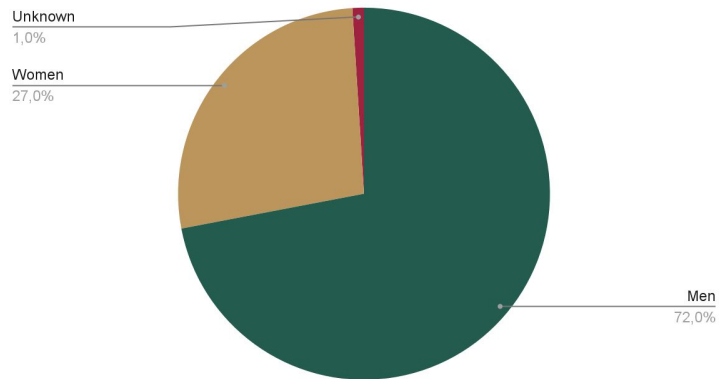


GOBIERNO DE LA
CIUDAD DE MÉXICO

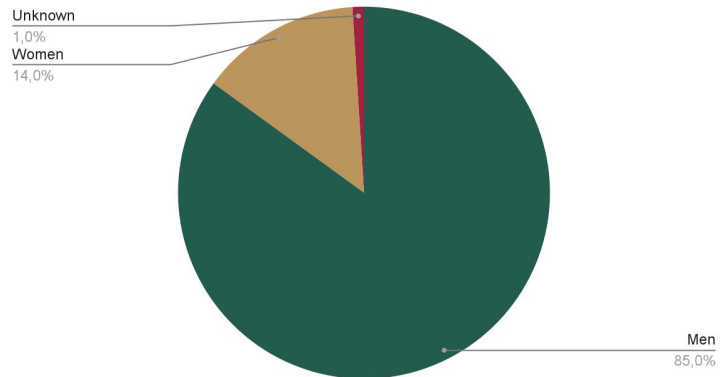
SECRETARÍA
DE MOVILIDAD

WOMEN'S ROAD SAFETY DATA

ROAD INJURIES 2021



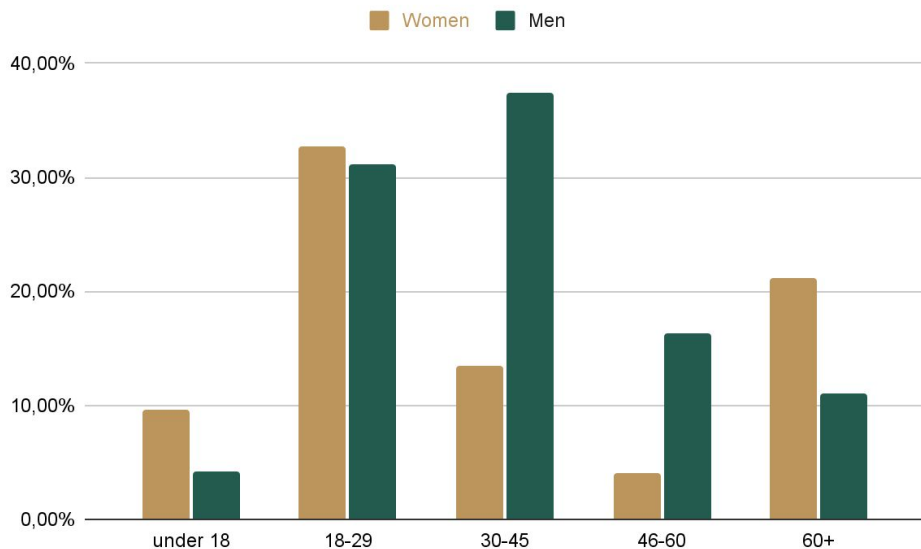
ROAD FATALITIES 2021



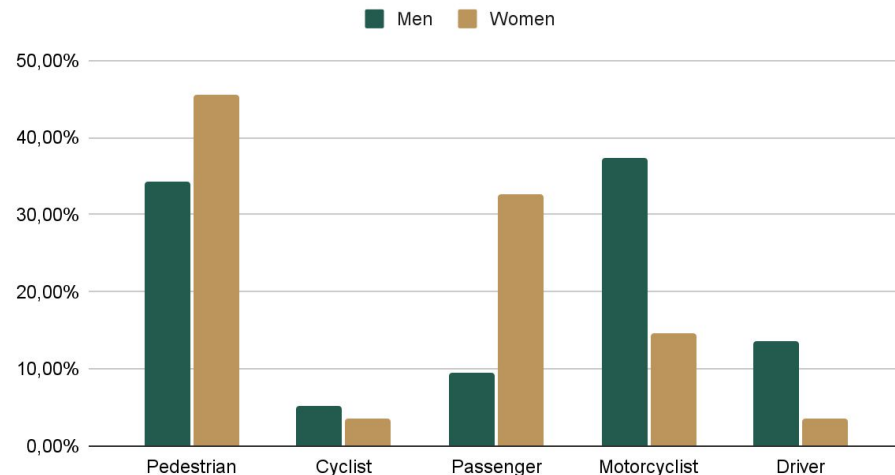
Nota: Se promediaron las cifras por año de SSC, FGJ y TSJ-PJCDMX.



WOMEN'S ROAD SAFETY DATA



Type of vehicle



- 6 out of 10 women

Nota: Se promediaron las cifras por año de SSC, FGJ y TSJ-PJCDMX.

ROAD SAFETY AND GENDER POLICIES

Road safety, inclusion, equity, gender and
sustainability: exploring links

November 2021

PEDESTRIAN MOBILITY



WALK FREE, WALK SAFE



PUBLIC SPACE ATTENDED FOR GIRLS AND WOMEN SAFETY

WALK FREE, WALK SAFE



COMPREHENSIVE INTERVENTION: ROAD SAFETY AND PUBLIC SECURITY

WALK FREE, WALK SAFE



REDUCTION OF GENDER RELATED CRIMES.



GOBIERNO DE LA
CIUDAD DE MÉXICO

SECRETARÍA
DE MOVILIDAD



SAFE INFRASTRUCTURE: PEDESTRIAN CROSSWALKS

Cruces Seguros - ETAPA 1 (37 intersecciones)

	Abril 2018 – Marzo 2019	Abril 2019 – Marzo 2020	Variación (%)
Hechos de tránsito	279	235	-16%
Víctimas	342	261	-24%
Atropellamientos	81	68	-16%

Cruces Seguros - ETAPA 2 (42 intersecciones)

	Enero – Marzo 2019	Enero – Marzo 2020	Variación (%)
Hechos de tránsito	72	54	-25%
Víctimas	90	61	-32%
Atropellamientos	17	8	-53%

Proyectos Chapultepec, Hidalgo, Reforma, Ceylan, etc. (35 intersecciones)

	Enero – Marzo 2019	Enero – Marzo 2020	Variación (%)
Hechos de tránsito	39	27	-31%
Víctimas	49	33	-33%
Atropellamientos	10	8	-20%

BEFORE



AFTER



117 CROSSWALKS AND 222 KM OF WALK FREE, WALK SAFE



GOBIERNO DE LA
CIUDAD DE MÉXICO

SECRETARÍA
DE MOVILIDAD



SAFE INFRASTRUCTURE: SLOW TRAFFIC STREETS



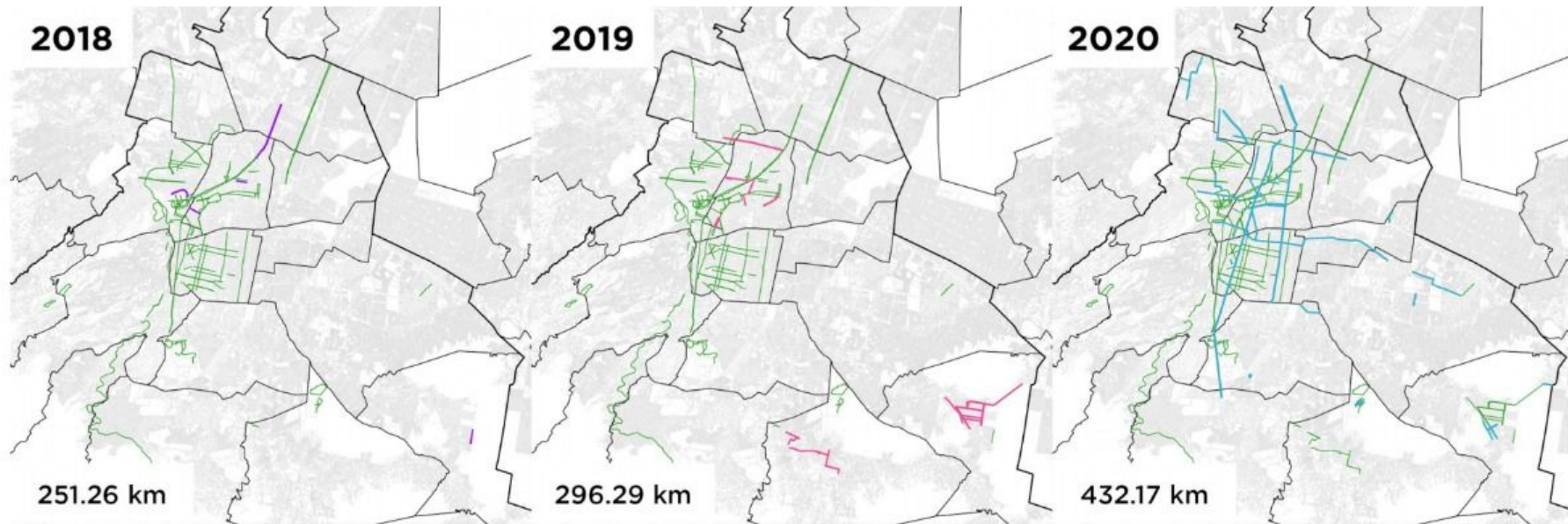
Santa María la Redonda / Balderas



SAFE INFRASTRUCTURE: STREET REDESIGN



SAFE INFRASTRUCTURE: CYCLING



**22% OF CYCLING TRIPS ARE MADE BY WOMEN
WOMEN FEEL SAFER RIDING A BICYCLE**

SAFE INFRASTRUCTURE: CYCLING



220 km of new cycling infrastructure and road maintenance

SAFE INFRASTRUCTURE: CYCLING



OPEN STREET PROGRAMS AND BIKE SCHOOL FOR WOMEN

INTEGRATED MOBILITY



THANK YOU





GOBIERNO DE LA
CIUDAD DE MÉXICO

**SECRETARÍA
DE MOVILIDAD**